

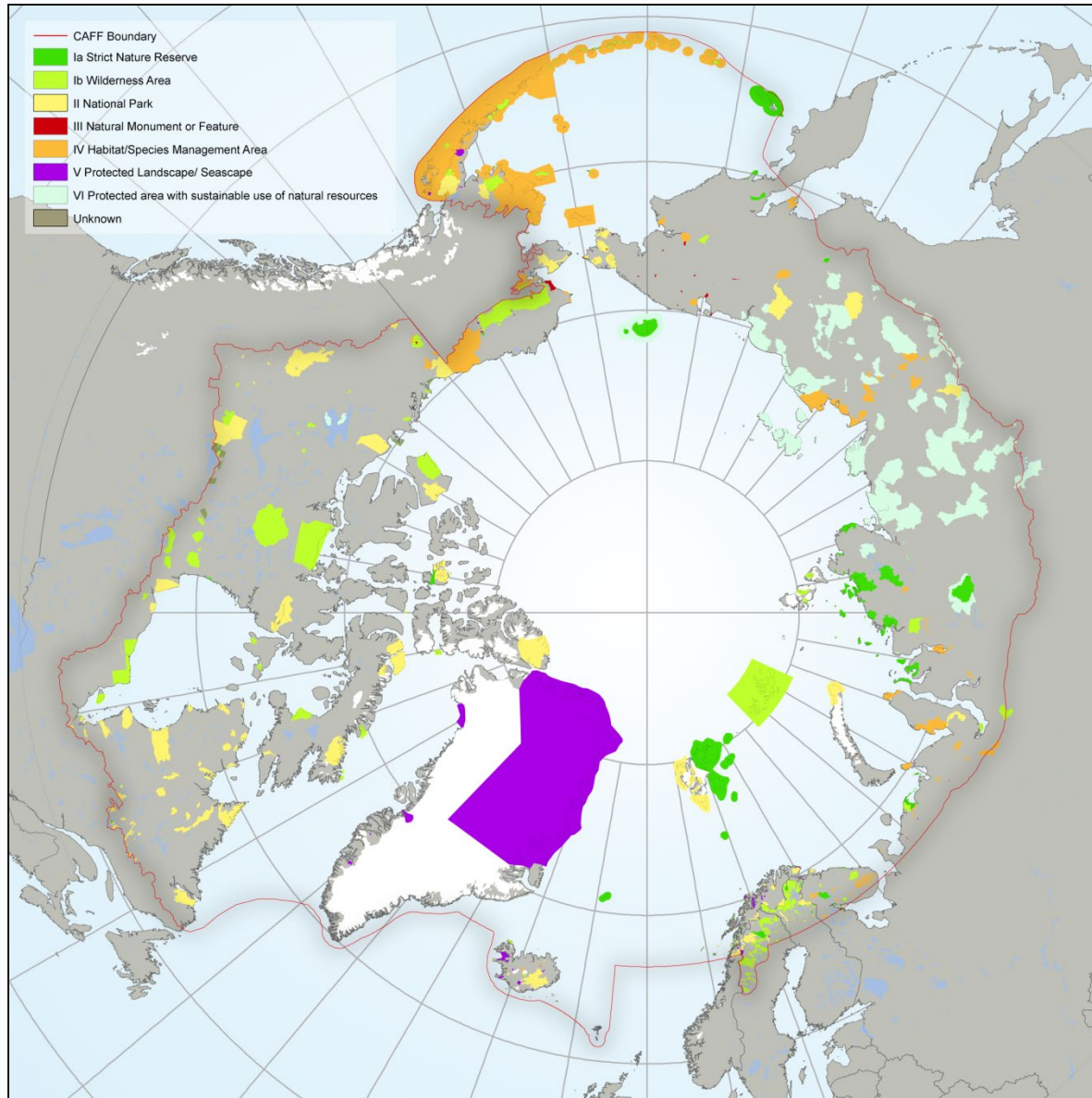
Protected Areas Conservation: Needs and Challenges

Cynthia Jacobson, Ph.D.

CAFF Chair

U.S. Fish and Wildlife Service





2016

Arctic Council: Protected Areas Work

Assessments

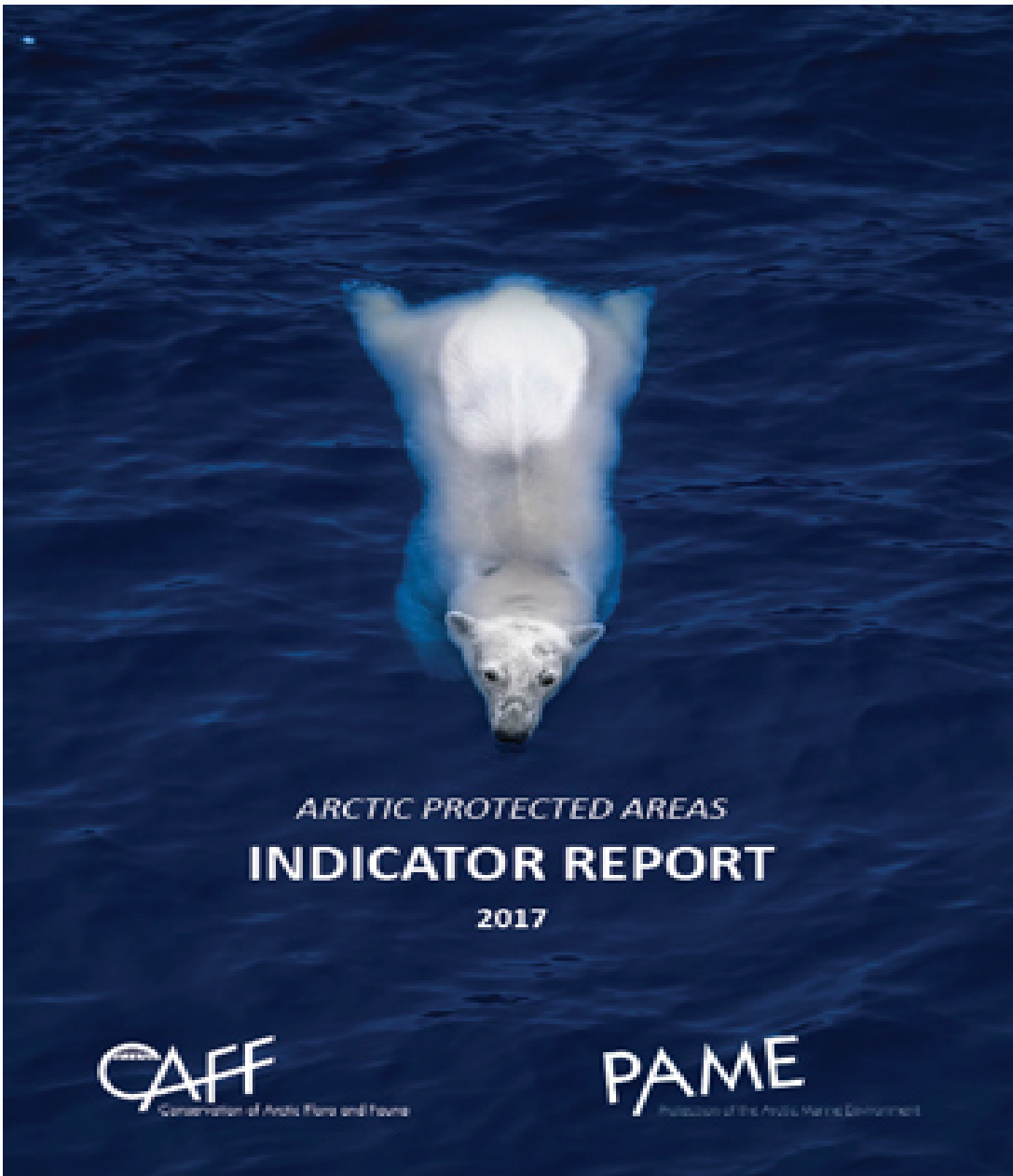
- Arctic Biodiversity Assessment
- Arctic Marine Shipping Assessment
- Arctic Ocean Review

Strategies/action plans

- Arctic Marine Strategic Plan
- Actions for Arctic Biodiversity 2013-2021
- Framework for A Pan-Arctic Network of Marine Protected Areas

Products/actions

- Arctic Protected Areas Indicator Report
- Identification of marine areas sensitive to shipping
- MPA Toolkit
- Workshops on connectivity
- Conservation initiatives such as AMBI



ARCTIC PROTECTED AREAS
INDICATOR REPORT
2017

CAFF
Conservation of Arctic Flora and Fauna

PAME
Partnership of the Arctic Marine Environment

Protected Areas: Status and Trends

Area covered

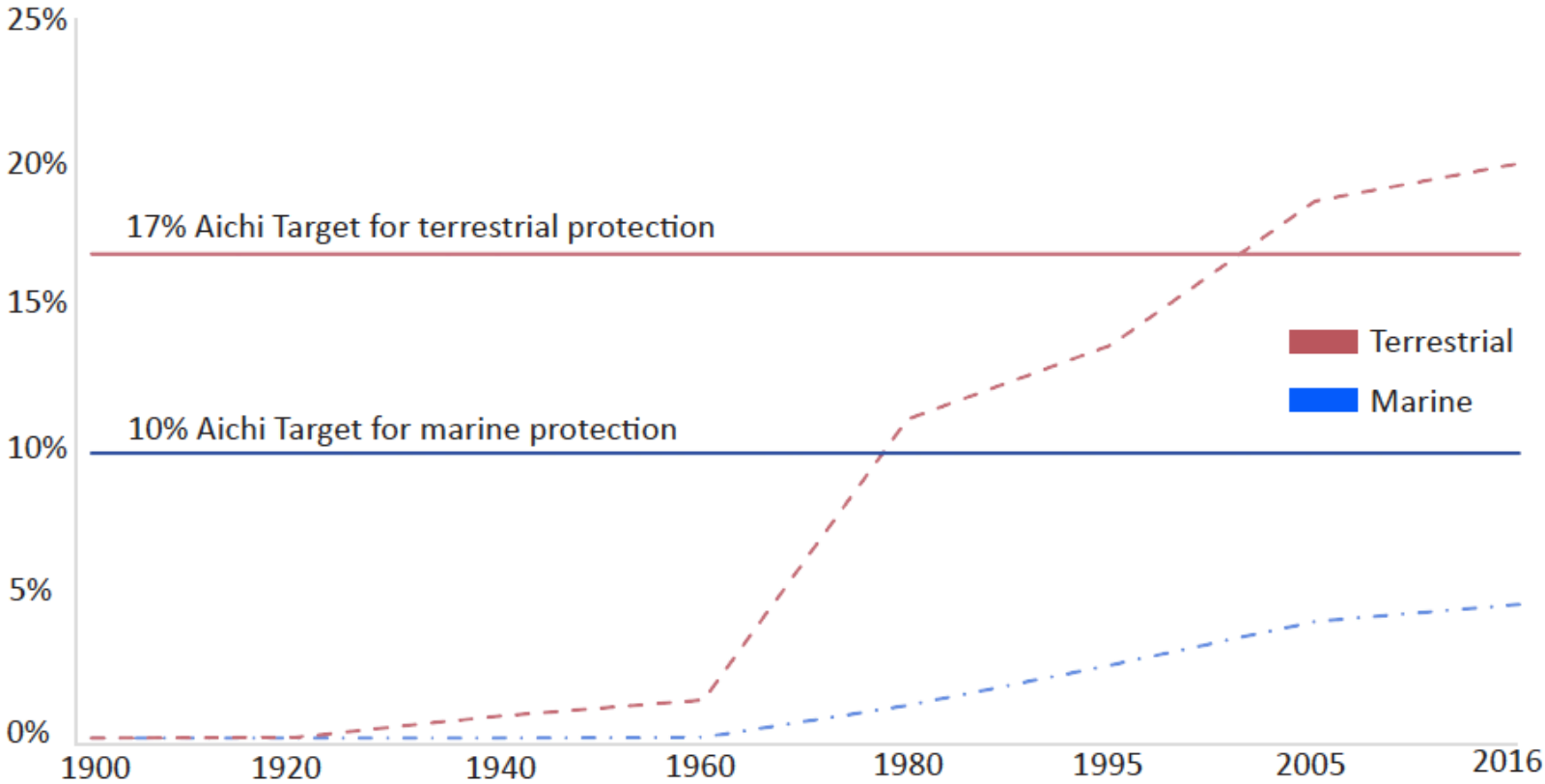
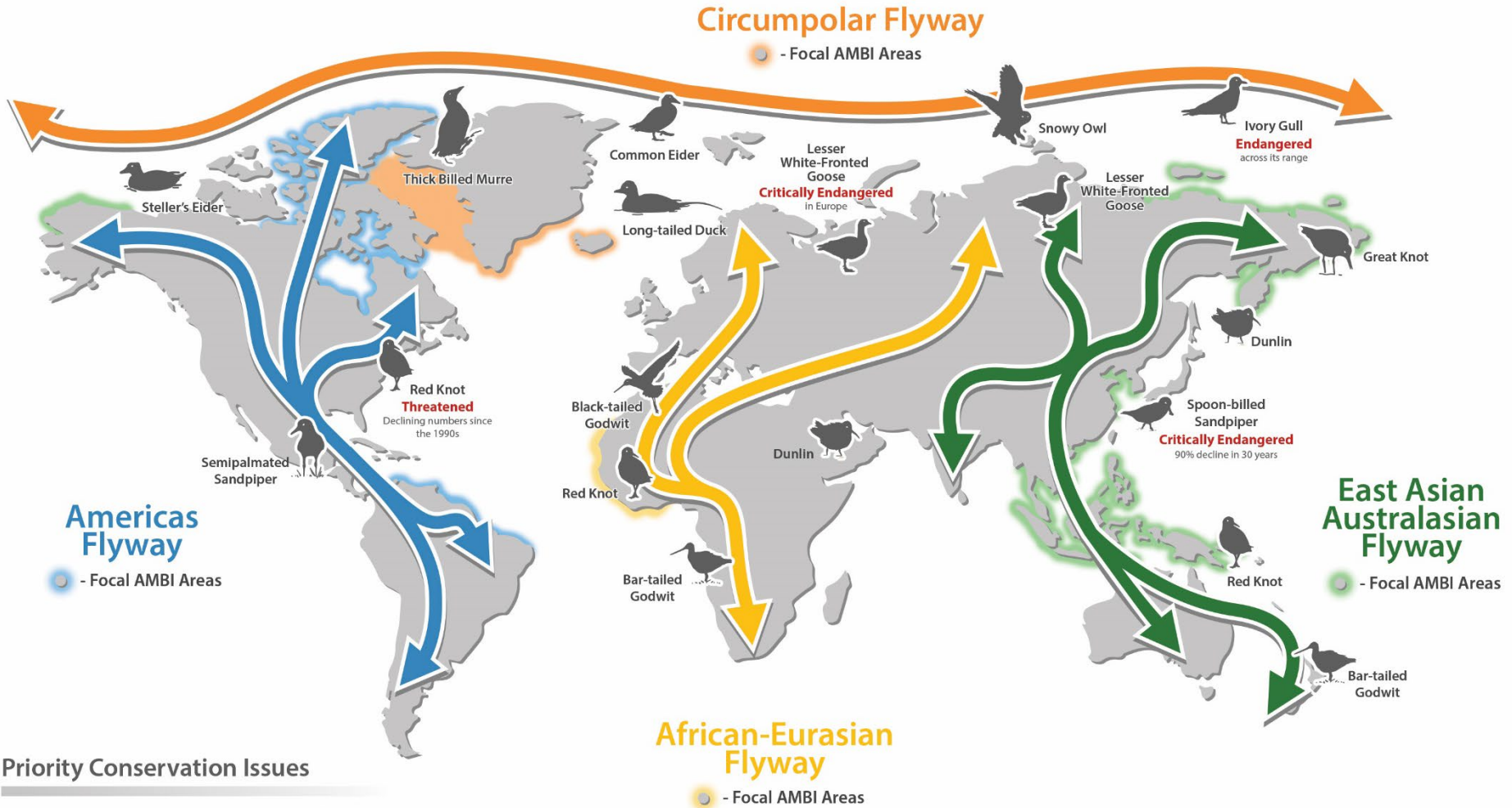


Figure 2: Trends in terrestrial and marine protected area coverage within the CAFF boundary, 1900-2016.

The Arctic Migratory Birds Initiative (AMBI)

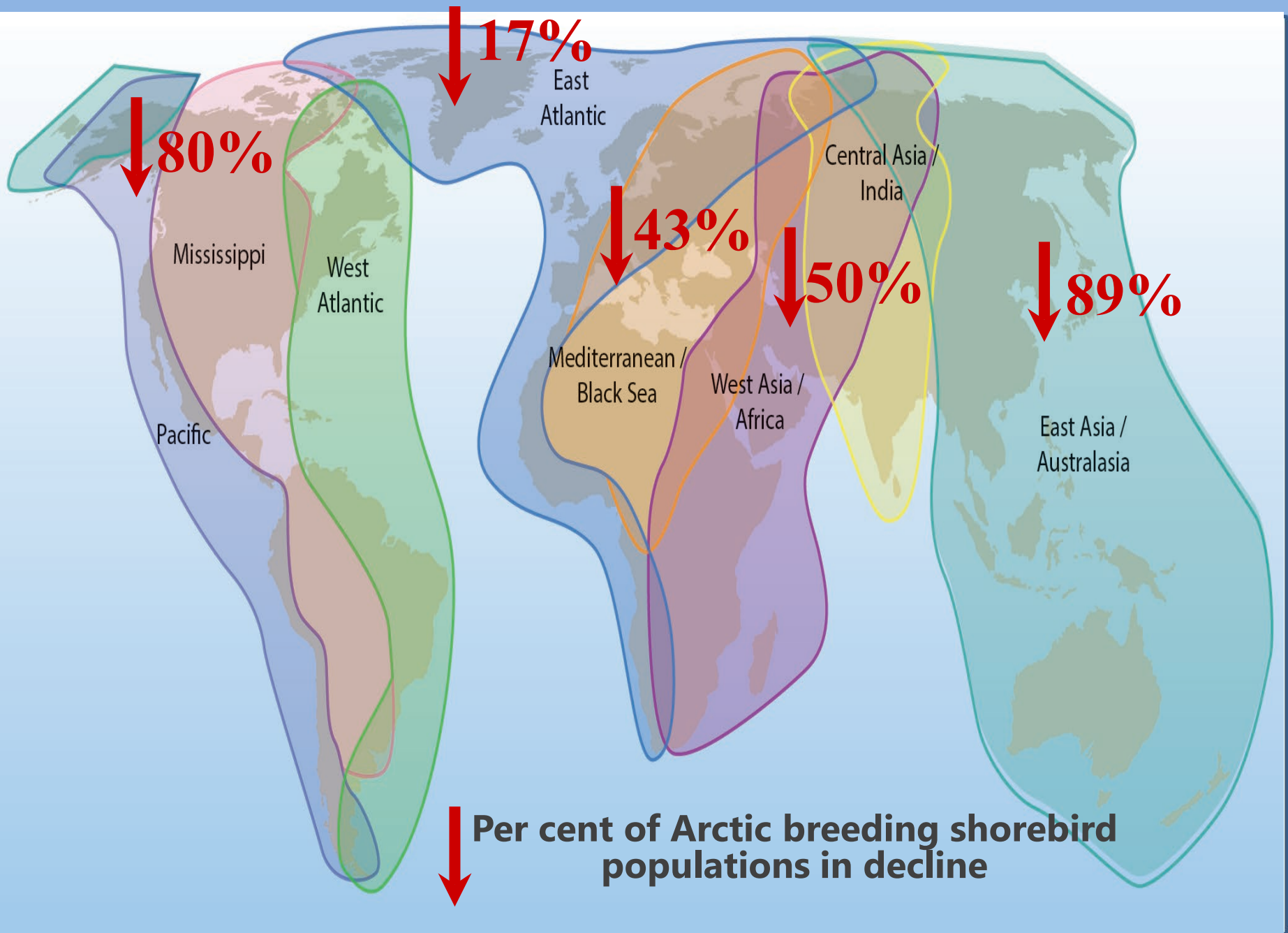


The Arctic Migratory Birds Initiative (AMBI) is a project under the Conservation of Arctic Flora and Fauna (CAFF) designed to improve the status and secure the long-term sustainability of declining Arctic breeding migratory bird populations. AMBI works with many partner countries and organizations to support and initiate actions that target **priority species** and **conservation issues** across a series of **focal geographies**.



Priority Conservation Issues





Challenges and Needs

- Analyses of social and economic benefits
 - Indigenous values
- Evaluate effectiveness, resilience
 - Adaptive management
- Strategic expansion of network and work outside network
 - Marine
 - AMBI



Thank you

**For more information
please visit:**

www.caff.is

www.pame.is

Photo by Carsten Egevang