

CAFF

Conservation of Arctic Flora and Fauna

ARCTIC COUNCIL WORKING GROUP

CAFF addresses the conservation of Arctic biodiversity and communicates its findings to the governments and residents of the Arctic, helping to promote practices which ensure the sustainability of the Arctic's living resources.

AREAS OF WORK:

- Mainstreaming biodiversity
- Ecosystem services
- Communications and outreach
- Adaptation to climate change
- Coordination of long-term biodiversity monitoring
- Stressors on biodiversity
- Protecting migratory species
- Assessments and indicator development
- Safeguarding biodiversity under changing conditions
- Cumulative effects
- Bringing together different knowledge systems
- Contributing to the Convention on Biological Diversity, the Sustainable Development Goals, and the new global biodiversity post 2020 framework
- Improving knowledge and public awareness

QUICK FACTS

ESTABLISHMENT
1992

INCOMING CHAIR

Mia Rönkä
Finland
miaron@utu.fi
(2021-2023)

OUTGOING CHAIR

Mark Marissink
Sweden
Mark.Marissink@
naturvardsverket.se
(2019-2021)

CONTACT

Tom Barry
Executive Secretary
tom@caff.is
caff.is
twitter.com/CAFFSecretariat
facebook.com/CAFFS

CONTEXT

The six Arctic Council Working Groups execute the projects and programmes mandated by the Foreign Ministers of the Arctic States.





GLEEB PILIPENKO / ARCTIC COUNCIL



CAROLYN MALLORY / ARCTIC COUNCIL

PROGRAMMES

CIRCUMPOLAR BIODIVERSITY MONITORING PROGRAMME (CBMP)

An international network of scientists, governments, Indigenous organizations and conservation groups working to harmonize and integrate efforts to monitor the Arctic's living resources to facilitate more rapid detection, communication, and response to the significant biodiversity-related trends and pressures affecting the circumpolar world.

caff.is/monitoring

ARCTIC MIGRATORY BIRDS INITIATIVE (AMBI)

Acting in partnership to support healthy populations of priority Arctic-breeding migratory birds in decline.

caff.is/ambi

ARCTIC BIODIVERSITY DATA SERVICE (ABDS)

Making biodiversity data accessible to inform decision- and policy-making.

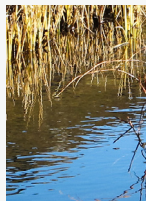
abds.is

FEATURED 2021 PUBLICATIONS



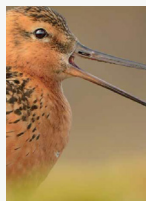
STATE OF THE ARCTIC TERRESTRIAL BIODIVERSITY REPORT (START)

Key findings and advice for monitoring



RESILIENCE AND MANAGEMENT OF ARCTIC WETLANDS

Key Findings and Recommendations

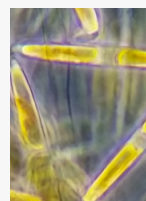


AMBI EVALUATION 2021

Summary of 2019-2020 activities and advice for implementation



CAFF ARCTIC YOUTH ENGAGEMENT STRATEGY: 2021-2026



CIRCUMPOLAR BIODIVERSITY MONITORING PROGRAMME (CBMP) STRATEGIC PLAN (2021-2025)