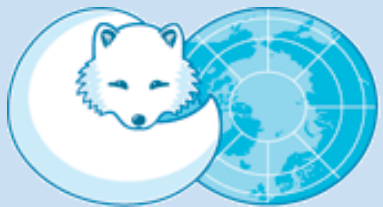


ACAP Initiative Update: Circumpolar Local Environmental Observer (CLEO) Network

Patrick Huber, U.S. EPA

March 16, 2016



ARCTIC COUNCIL



ACAP ARCTIC CONTAMINANTS
ACTION PROGRAM

What LEO does

- Provides a system for indigenous and remote communities to report unusual events and anomalies in their environment
- Connects Arctic indigenous knowledge and TEK to science, research, policy, and regulatory communities
- Serves as a bridge for sharing knowledge between elders and indigenous youth
- Creates a common Arctic community among remote, disparate communities



ACAP Project – Establish Circumpolar LEO (CLEO)

- Phase One
 - Develop a **framework for the expansion** of the LEO Network in the Arctic
 - Establish **North American chapters** of LEO in U.S. and Canada
- Phase Two
 - Establish **additional country, regional hubs** in the LEO Network (Fenno-Scandinavian chapter)
- Phase Three
 - Link all LEO hubs into **Circumpolar Environmental Observer Network (CLEO)**

Deliverables under U.S. Chairmanship

1) Establish North American regional chapter of LEO in U.S. and Canadian Arctic

- Develop curriculum and guidance for new observers and hubs
- Conduct workshop in Canada (expected in July 2016)
- Assess and train new observers and hub managers
- Potential observer and regional hub communities, community organizations in northwestern Canada identified (British Columbia & Northwest Territories)

2) Development of a framework to explore the expansion of the LEO network

- Bringing on additional partners, engaging other AC working groups
- Cataloging activity in Fenno-Scandinavian region for linkages, potential hubs
- Planned workshop scheduled for June 2016 in Inari, Finland

CLEO - Short-term deliverables

New Tools

- Mobile application
- Curricula and guidance for observers, regional hubs online and print by June 2016

Fact Sheet

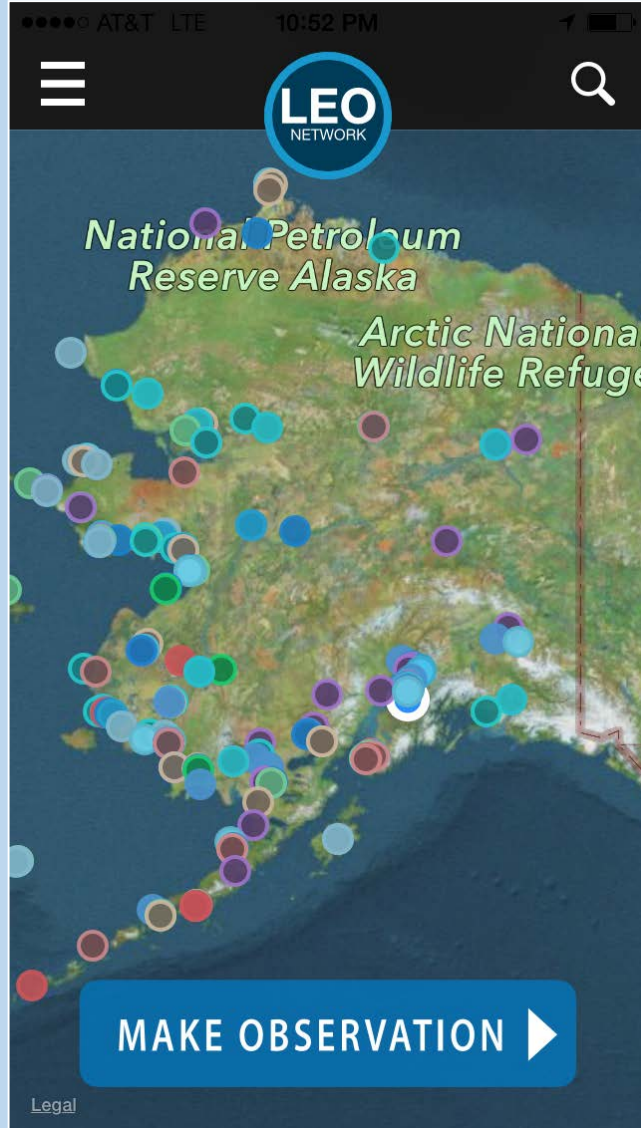
- CLEO fact sheet available at SAO meeting

Workshops

- Inari, Finland in June 2016
- Canada (location TBD) July 2016

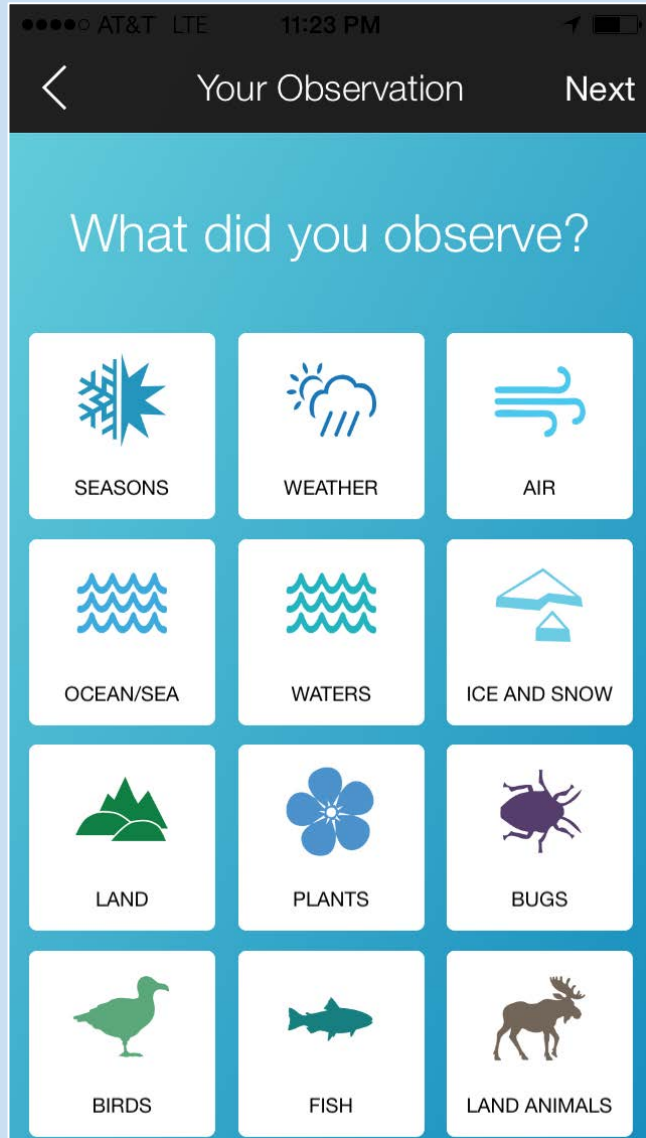


LEO Reporter Mobile App



- Brings the Network to smart phones
- Allows geo-located observations
- Pins observations from across the LEO network
- Links observations and observers through categories
- Available at Google and iTunes app stores

LEO Reporter Mobile App



- Searchable by keyword, category, or location
- Iconography is utilized to allow observations without the need for a specific language requirement
- Reports include write-ups, photos, audio, and consultations

Future Work on CLEO

- Phase Two
 - Establish additional country, regional chapters in the LEO network
- Phase Three
 - Link all LEO chapters into Circumpolar Local Environmental Observer Network (CLEO)

Moving forward

- Establishing links with other local observation systems
- Securing sustainable, long-term funding and support for CLEO
- Coordinating with other Arctic Council working groups